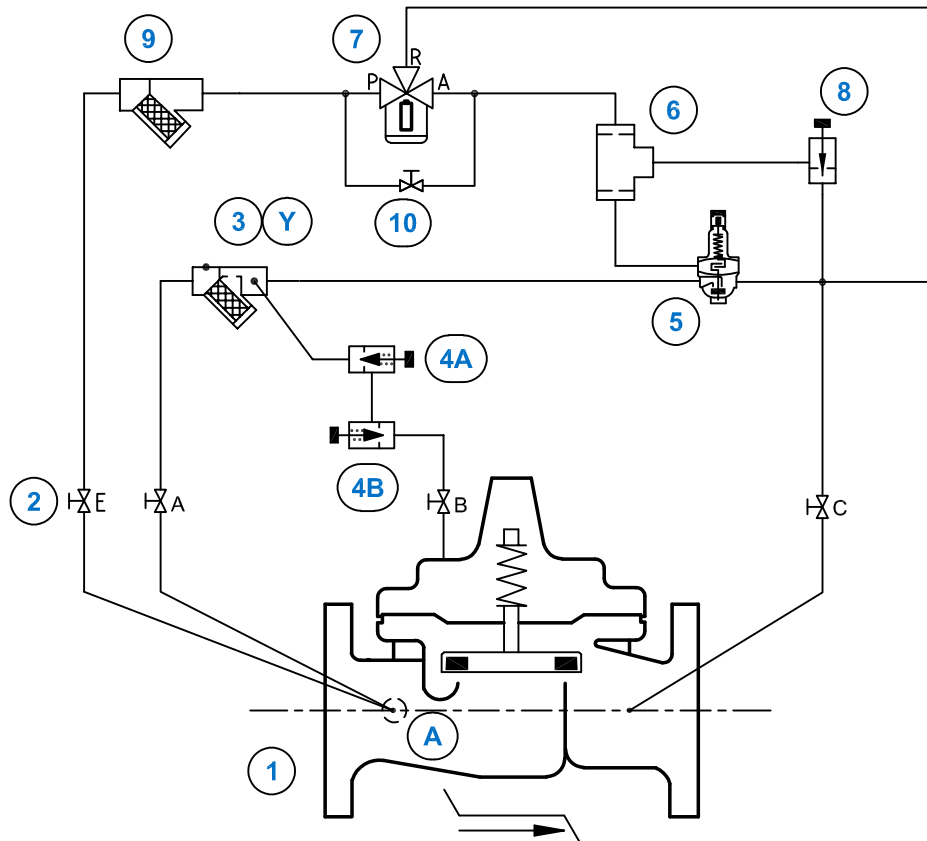


## Dual Stage Pressure Modulation Control Valve e-Timer Autonomous Electronic Controller



### STANDARD EQUIPMENT

| No | Description                            | Qty | Type       |
|----|--|-----|------------|
| 1  | MAIN VALVE HYTROL AE/GE/NGE            | 1   | 100-01     |
| 2  | ISOLATION BALL VALVE                   | 4   | RB-117     |
| 3  | STRAINER WITH INCORPORATED ORIFICE     | 1   | X44-A      |
| 4  | ONE-WAY FLOW CONTROL                   | 2   | CV         |
| 5  | MODULATION CONTROL                     | 1   | CPM-A      |
| 6  | RESTRICTION ASSEMBLY                   | 1   | X58A/KX**  |
| 7  | ELECTRONIC AUTONOMOUS CONTROLLER       | 1   | E-TIMER-33 |
| 8  | NEEDLE VALVE                           | 1   | 6120       |
| 9  | STRAINER                               | 1   | X43        |
| 10 | ISOLATION BALL VALVE (NORMALLY CLOSED) | 1   | RB-117     |

### OPTIONAL FEATURES

| No | Description            | Qty | Type      |
|----|------------------------|-----|-----------|
| A  | FLOW CLEAN STRAINER    | 1   | X46A      |
| Y  | HIGH CAPACITY STRAINER | 1   | X43-80/EP |

### NOTES

AE/GE : DN 32 - DN 400 / NGE : DN 50 - DN 600

(1) 100-01 \* :

AE/GE DN 50 - DN 100 / NGE DN 65 - DN 150 : 100-LFS

AE/GE DN 150 - DN 400 / NGE DN 200 - DN 600 : 100-01

(6) X58A/KX \*\* : 58846

OPTIONAL FEATURES : \_\_\_\_\_

NOT FURNISHED BY CLA-VAL : \_\_\_\_\_