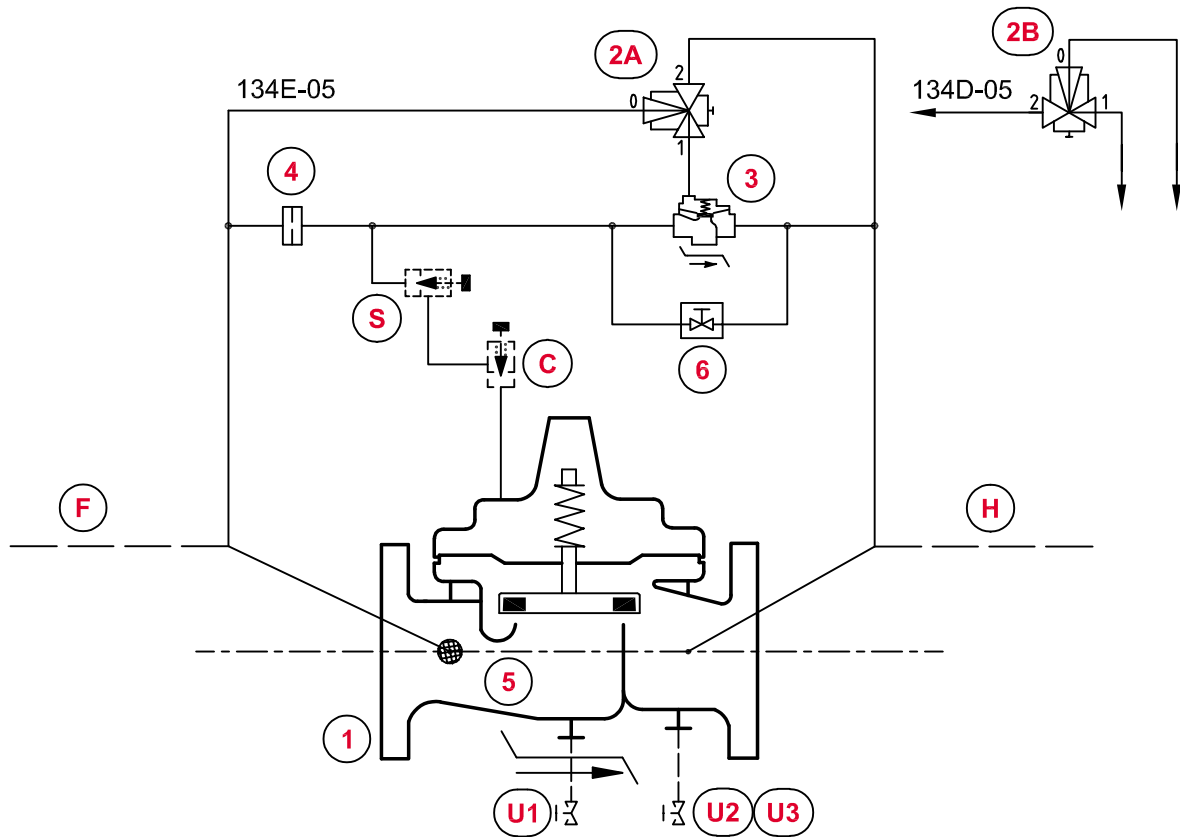




CLA-VAL 134E/D-05

Solenoid Control Valve (for Fire Deluge Service)

UL Listed DN 80 (3") - DN 300 (12")



STANDARD EQUIPMENT

No	Description	Qty	Type
1	MAIN VALVE HYTROL-DELUGE AE/GE/NGE	1	100-01G
2A	3-WAY SOLENOID VALVE (NO)	1	311-D
2B	3-WAY SOLENOID VALVE (NC)	1	311-C
3	AUXILIARY VALVE HYTROL	1	100-01
4	RESTRICTION ASSEMBLY	1	X58C-CSA
5	FLOW CLEAN STRAINER	1	X46A
6	EMERGENCY MANUAL OPERATOR WITH WARNING LABEL	1	CMD-12

OPTIONAL FEATURES

No	Description	Qty	Type
C	ONE-WAY FLOW CONTROL (CLOSING SPEED)	1	CV
F	REMOTE SENSING	1	-
H	DRAIN TO ATMOSPHERE	1	-
S	ONE-WAY FLOW CONTROL (OPENING SPEED)	1	CV
U1	UPSTREAM DRAIN VALVE	1	RB-117
U2	DOWNSTREAM DRAIN VALVE	1	RB-117
U3	AUTOMATIC DRIP CHECK	1	ADC-1

NOTES

AE/GE : DN 50 - DN 300

(#) = According to valve size this feature type could change

OPTIONAL FEATURES : _____

NOT FURNISHED BY CLA-VAL : _____



CLA-VAL 134E/D-05

Solenoid Control Valve (for Fire Deluge Service)
UL Listed DN 80 (3") - DN 300 (12")

▶ Operating data

1.1 ▶ SOLENOID CONTROL FEATURE

Solenoid control 311-D (2A) or 311-C (2B) is a direct acting, 3-way solenoid control valve that applies or relieves pressure in the cover chamber of auxiliary valve (3), providing the operation shown in the following table:

134E-05			
Solenoid 311-D (2A)		Auxiliary valve (3)	Main valve (1)
State	Ports connected	Position	Position
Energized	1 - 2	Open	Open
De-energized	0 - 1	Closed	Closed

134D-05			
Solenoid 311-C (2B)		Auxiliary valve (3)	Main valve (1)
State	Ports connected	Position	Position
Energized	2 - 1	Closed	Closed
De-energized	1 - 0	Open	Open

1.2 ▶ SELF-CLEANING STRAINER

The self-cleaning strainer CLA-VAL, type X46A (5) is at the inlet of the main valve (1) screwed. The assembly of the self-cleaning strainer (5) removes the assembly of an external filter.

The check of the self-cleaning strainer (5) is requesting its removal from the main valve body (1).

1.3 ▶ REMOTE HYDRAULIC CONTROL / EMERGENCY OPENING ON SITE

Open emergency manual operator CMD-12 (6) to by-pass the action of the solenoid valve (2A) or (2B). The main valve (1) opens fully.

Note: Emergency manual operator (6) must be closed during normal operation.

1.4 ▶ OPTIONAL FEATURES

No (C) - Closing speed:

Flow control CV (C) regulates the closing speed of main valve (1).

Flow control (C) adjustment: Turn the adjusting screw clockwise to make the valve close more slowly.

No (F) - Remote sensing:

Remote sensing is obtained from a point upstream of the main valve (1) inlet, by a pipe size Ø 12 mm (not furnished by CLA-VAL Europe), which must not have any high points and so formation of air pockets and avoid any pulsation of control.

Note: Independent operating pressure must be equal to or greater than pressure at the main valve inlet at all times.



CLA-VAL 134E/D-05

Solenoid Control Valve (for Fire Deluge Service)
UL Listed DN 80 (3") - DN 300 (12")

No **(H)** - Atmospheric drain:

Pilot system drain line is discharged to atmosphere. [Pilot system drain line is connected to the main valve outlet boss if suffix **(H)** is not specified].

No **(S)** - Opening speed:

Flow control **(S)** regulates the opening speed of main valve **(1)**.

Flow control (S) adjustment: Turn the adjusting screw clockwise to make the valve open more slowly.

No **(U3)** - Automatic drip check:

Automatic drip check control ADC-1 **(U3)** will close upon downstream system flow increase and will automatically open when downstream pressure decreases.

1.5 ▶ CHECK LIST FOR PROPER OPERATION

- System valves open upstream and downstream.
- Periodical checking of the self-cleaning strainer **(5)**.
- Solenoid valve **(2A)** or **(2B)** connected as requested with correct voltage.
- Manual solenoid valve **(2A)** or **(2B)** override disengaged.
- Emergency manual operator **(6)** closed.
- Isolation ball valves [optional feature **(U1)** and **(U2)**] closed during normal operation.
- Flow control(s) [optional feature **(C)** or/and **(S)**] open at least 1 turn.
- Remote control line properly connected [optional feature **(F)**].