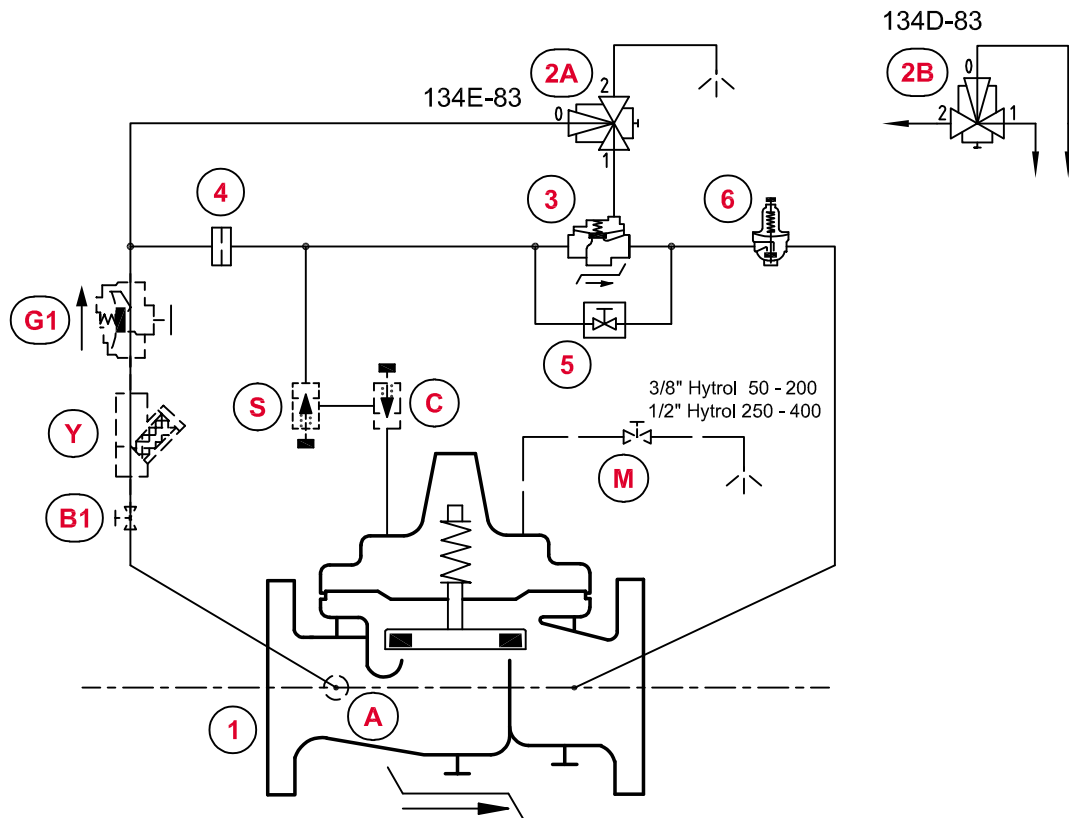


Electrically Actuated Hydraulic Deluge Valve with Manual Bypass and Downstream Pressure Control



STANDARD EQUIPMENT

No	Description	Qty	Type
1	MAIN VALVE HYTROL-DELUGE AE/GE	1	100G/KX
2A	3-WAY SOLENOID VALVE (NO)	1	311-D
2B	3-WAY SOLENOID VALVE (NC)	1	311-C
3	AUXILIARY VALVE HYTROL	1	100-KHR
4	RESTRICTION ASSEMBLY	1	X58-CSA
5	EMERGENCY MANUAL OPERATOR WITH WARNING LABEL	1	CMD-12
6	PRESSURE REDUCING CONTROL	1	CRD

OPTIONAL FEATURES

No	Description	Qty	Type
A	FLOW CLEAN STRAINER	1	X46A
B1	ISOLATION BALL VALVE	1	RB-117
C	ONE-WAY FLOW CONTROL (CLOSING SPEED)	1	CV
G1	CHECK VALVE	1	81-01
M	MANUAL OPERATOR	1	RB-117
S	ONE-WAY FLOW CONTROL (OPENING SPEED)	1	CV
Y	STRAINER	1	X43

NOTES

AE/GE : DN 80 - DN 400
 * Main Valve 100G on DN 80 - 100 - 150 - 200 - 250 & 300
 100G/KX on DN 400

OPTIONAL FEATURES : _____
 NOT FURNISHED BY CLA-VAL : _____