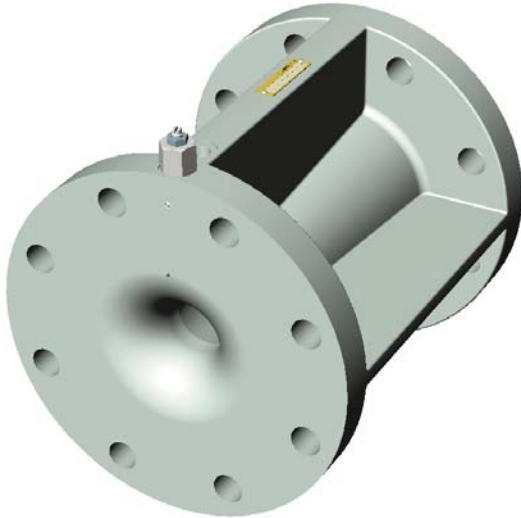




# 4" Compact Venturi



- Compact Size for Smaller Refueling Vehicles
- Aluminum Body with Stainless Steel Control
- Four Inch Flat Face ANSI 150 Flanges
- Ten Inches Face To Face
- Unique Design Eliminates External Plumbing
- Four Ribs For Structural Strength
- Six Throat Diameters Available
- Adjustable Pressure Drop Compensation

The four inch Model X69H-C Compact Venturi is designed for use on modern, compact refueling vehicles such as towable or stationary carts. It generates an adjustable nozzle pressure signal that can be utilized by a pressure control coupler or in-line pressure control valve to control delivery pressure to the aircraft.

The compact design of the Cla-Val Model X69H-C Venturi is ideal for use on stationary refueling carts and in any system where space is an issue. Our unique design eliminates external plumbing. This feature simplifies installation, and maintenance, and also prevents fuel spills that can occur when exterior plumbing is hit or damaged.

The Model X69H-C Venturi can be mounted in any orientation without

affecting performance. This allows the Venturi to be located in tight spaces with only the adjustment screw accessible for servicing.

The Venturi body is an aluminum casting featuring four ribs that extend from flange to flange. These ribs give the Venturi structural strength needed to carry piping loads that can be generated by extreme temperatures and pressures. The Venturi features flat face flanges conforming to

ANSI 150 lb. Class.

The Model X69H-C Venturi is available with six different throat diameters so that you can select the Venturi with the appropriate pressure drop and pressure recovery requirements. Use the tables and graphs below to determine the appropriate throat bore diameter for your application.

THROAT DIAMETER	MAX. FLOW (gpm)	P1 - P3 PRESSURE DROP (psid)	P3 - P2 PRESSURE RECOVERY (psid)
1.50"	500	7.0	42
1.60"	600	9.3	42
1.70"	700	10.1	42
1.80"	750	10.3	40
1.90"	800	10.0	35
2.00"	900	11.0	34

