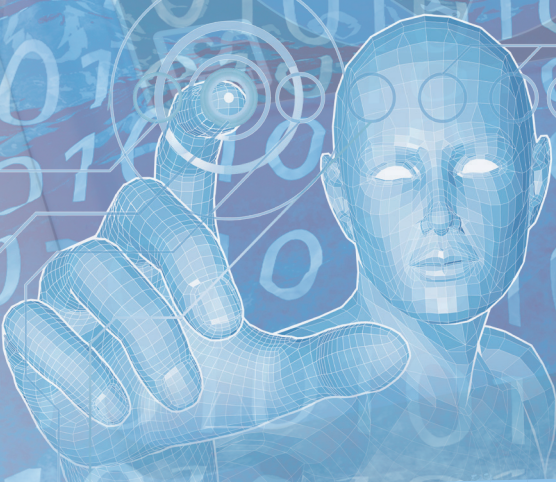


# Cla-Val CV-Log-35

## Advanced Data Logger

- Embedded flow calculation algorithm
- Data communication through 4G LTE-M & NB-IoT to any custom server
- Full remote configuration from CLA-VAL Link2Valves™
- On site wireless configuration from any smartphone, tablet or PC
- Up to 6 inputs
- Standard 5-year autonomy
- IP68 protection



**Leading  
the Innovation**







# CLA-VAL CV-LOG-35

Advanced Data Logger

## DESCRIPTION

**CLA-VAL CV-Log-35** is an ultra-low power smart data logger with 6 acquisition channels (4 analog and 2 digital inputs). Acquired data is stored in a large internal memory and can be transmitted through the 4G LTE-M and NB-IoT communication networks, optimized for data communication. The product is also compatible with legacy 2G (GPRS) networks.

The product can be connected to a custom remote server of your choice, or alternatively interfaced to the **CLA-VAL Link2Valves™** platform for easy, security-proven, and complete integration with full remote configuration.

**CV-Log-35** is an easy-to-use product, allowing quick and easy installation, thanks to a compact and ergonomic design, and longtime CLA-VAL field-proven experience. No need for cables or special software installation to connect the product; the CV-Log-35 is easily configured via a WiFi interface (auto-generated) from any smartphone, tablet, or computer.

Its intuitive interface allows easy product configuration and real-time information display such as inputs, data communication, events, battery capacity or other system settings. To ease deployment, product configuration can be saved and loaded in multiple devices.

**CLA-VAL CV-Log-35** embeds a standard lithium battery, providing 5 years battery life\*. Battery life can be extended with an optional external high-capacity battery.

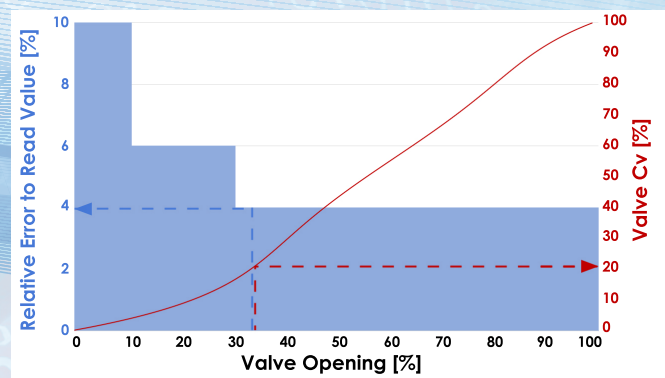
\*Depending on product configuration settings

## FLOW CALCULATION ALGORITHM

**CLA-VAL CV-Log-35** is built with powerful processors, embedding intelligent algorithms, such as **CLA-VAL ValveFlow™** flow computation based on the inlet and outlet pressures and the valve position with the **CLA-VAL e-Lift-35**. Based on three basic sensors, four hydraulic datasets are available (inlet pressure, outlet pressure, valve position and flowrate).



**ValveFlow™** will automatically compute the flow going through a CLA-VAL valve with an average precision of 4% relative to the read value, providing flow information in places where no flowmeter is available or allowing a higher level of diagnostic by comparing the **ValveFlow™** calculation to a reference flowmeter.



Refer to the **ValveFlow™** specific documentation for additional details.



# SPECIFICATION

## Power Supply

- Internal lithium battery (replaceable)
- Option: high-capacity lithium external battery
- Option: external power supply (6-24 VDC) compatible with CLA-VAL e-Power MP turbine

## Inputs

- 4x analog (ratiometric / 0-5 V / 0-10 V)
- 2x digital (dry contact or pulse)

## Logger & data storage

- Configurable logging interval
- Memory: 8 GB Micro-SD
- Interface to **Link2Valves™** for remote data access and configuration (optional) or communication to a custom server

## User Interface

- WiFi 802.11n/ac (auto-generated) for local configuration with smartphone, tablet or PC
- **CLA-VAL Link2Valves™** for remote configuration (if connected)

## Data Communication

- 4G (LTE-M1, NB-IoT) and 2G (GPRS)
- Micro SIM card (accessible)\*
- Extendable antenna with flexible cable

## Embedded Intelligence

- Option: **ValveFlow™** valve flowrate computation (requires CLA-VAL sensors)
- Other options: contact CLA-VAL

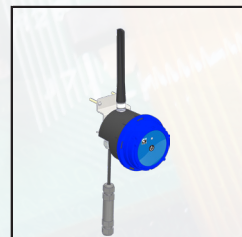
## Housing & General

- Dimensions: Ø 132 mm x L 130 mm (no antenna, no bracket)
- Easy opening system without screws or tools
- Material: PC / ABS plastic UV resistant
- Protection: IP68 (2 m, 1 month)
- Operating Temperature: -10°C to 70°C
- Storage Temperature: -20°C to 80°C

\*SIM card and data communication package sold separately or provided by the user

# PRODUCT CONFIGURATION

## 4 Base Models

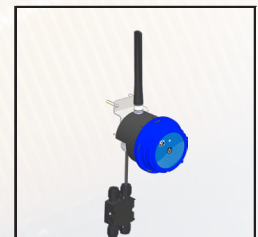


MEXE-CVL35-M1-01

1 input

Junction tube IP68

Communication\*



MEXE-CVL35-M3-01

2-3 inputs

Junction block IP68

Communication\*



MEXE-CVL35-M6-01

6 inputs

Junction box IP68

Communication\*



MEXE-CVL35-MZ-01

6 inputs

Free cable

Communication\*

## Accessories

- **MEX520.931S070701-IP6803**  
Ratiometric pressure sensor 0-16 bar IP68 3m
- **IALIFT35**  
e-Lift-35 valve position transmitter
- **CWCOM-EUR-4G**  
SIM card and data communication package (Europe)
- **MEX-PIL-032**  
133 Ah external high-capacity battery
- **300999**  
Valve-mount bracket



#### SWITZERLAND

Europe, Middle East & Africa  
Chemin des Mésanges 1  
CH-1032 Romanel-sur-Lausanne  
☎ + 41 21 643 15 55

#### UAE - DUBAI

Office 2004 , JBC5 - Cluster W - JLT  
P.O. Box 336812 Dubai, UAE  
☎ +971 4 5667665

#### USA

Global Headquarters  
1701 Placentia Avenue, Costa Mesa  
CA 92627-4475  
☎ + 949 722 4800

#### UNITED KINGDOM

Dainton House, Goods Station Road  
CGB - Tunbridge Wells  
Kent TN1 2 DH England  
☎ + 44 1892 514 400

#### FRANCE

ZAC du Champ du Périer  
1, Porte du Grand Lyon  
FR - 01700 Neyron  
☎ + 33 4 72 25 92 93

#### CANADA

4687 Christie Drive  
Beamsville, Ontario  
Canada LOR 1B4  
☎ + 905 563-4963

#### WATERWORKS

From the reservoir to the customer tap, the CLA-VAL Company has developed more than 3,500 Automatic Control Valve models.

Accurately controlling pressure, tank level and flows within water networks is the result of more than 80 years of unparalleled expertise.

#### NEW ZEALAND

45 Kennaway Road  
1 Woolston, Christchurch, 8023  
☎ + 64 396 44860

#### MEXICO

TubriValco, S.A. de C.V.  
Circunvalacion Jorge Alvarez  
del Castillo No 1206-3  
Col. Chapultepec Country  
CP 44620 - Guadalajara, Jalisco  
☎ + (33) 11309329



[WWW.CLA-VAL-EUROPE.COM](http://WWW.CLA-VAL-EUROPE.COM)